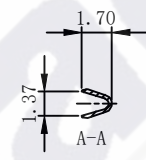
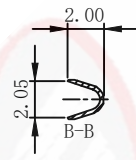
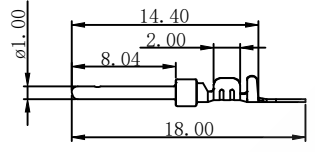
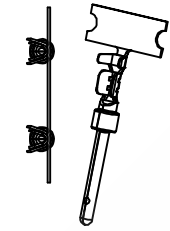
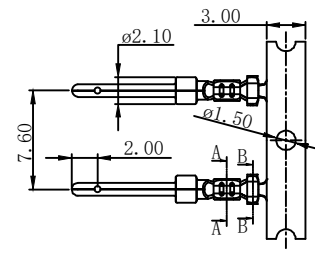
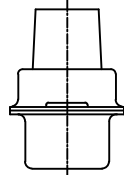
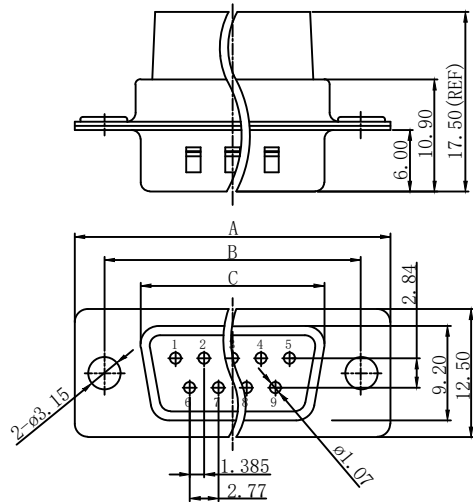


Male

Male Terminal

Specification:

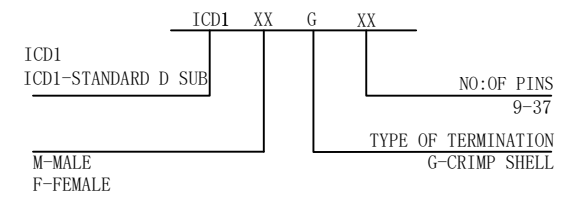
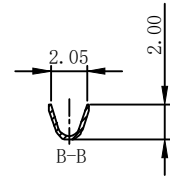
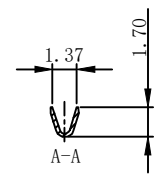
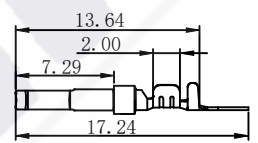
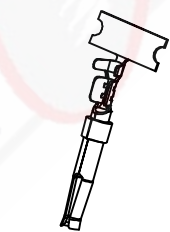
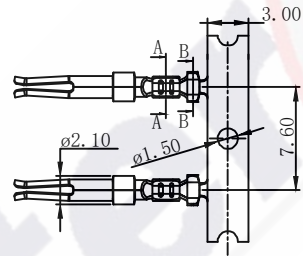
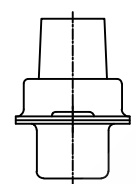
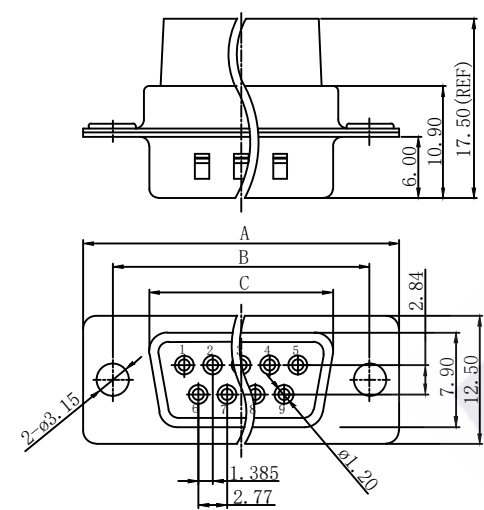
- 1.1.Contact Resistance: 20mΩ Max.Initial.
- 1.2.Dielectric Withstanding Voltage: 500V AC(rms) for 1 Minute.
- 1.3.Insulation Resistance: 1000Ω Min.
- 2.Mechanical Characteristic:
 - 2.1.Durability: 300 cycles
- 3.Environment Characteristics:
 - 3.1. Operating Temperature:0°C~+85°C.
 - 3.2. Storage Temperature:-20°C~+ 70°C.
- 4.Application Wire Awg: #20-24.



Female

Female Terminal

Position	A±0.2	B±0.2	C±0.2	
			Male	Female
9P	30.80	24.99	17.90	16.33
15P	39.14	33.32	26.50	24.66
25P	53.04	47.04	40.00	38.38
37P	69.32	63.50	56.50	54.84



Interace INTERFACE CONNECTRONICS PVT LTD

Address:#85, Unit#3, 1st Floor, V.V. Yoga Saurabha, S. C. Road, Yeshwanthpur, Bangalore- 560 022.

Product Description	D-Sub Standard Male and Female Crimp Type Connector				
Part no.	ICD1-XGXX	Version	A0	Proportion	
Customer Code	TBA	Customer Part No.	TBA	Unit	mm
Tolerance	X. ±0.50, X. ± 0.38, XX ± 0.25, XXX ± 0.13			File No.	TBA
Drawn By	NBC	Checked by	YN	Approved by	YRS
				Date	26-07-2024