

5

4

3

2

1

PIN CONFIGURATION

SIDE A	COLOUR	SIDE B
PIN#1	RED	OPEN
SHELL	BLACK	OPEN

FINISHED GOOD(CA) PART NO: DESCRIPTION

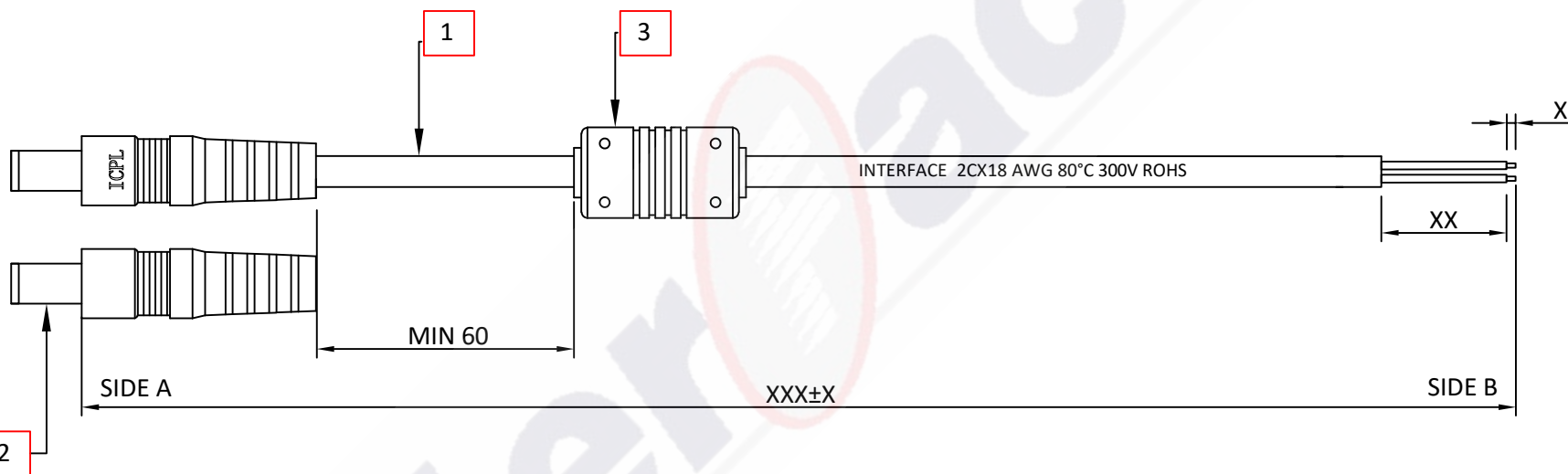
RCA-9001 XX 01

TYPE OF CA COLOUR OF CA

RCA-9001: DC JACK STRAIGHT 2.5MM OUTPUT CABLE w/ FERRITE CORE TO OPEN BLACK

LENGTH OF CA
0.1 TO XX MTRS

FOR EXAMPLE;
PART NO: RCA-9001-1-01
DESC: DC JACK STRAIGHT 2.5MM OUTPUT CABLE w/ FERRITE CORE TO OPEN
LENGTH: 1MTR



SL NO	DESCRIPTION	QTY
1	41/0.16 2CX18AWG DC JACK CABLE	1NOS
2	DC PIN 5.5-2.5-22.5	1NOS
3	FC 10.5X20X5.5	1NOS

		Description	DC JACK STRAIGHT 2.5MM OUTPUT CABLE w/ FERRITE CORE TO OPEN, L-XX METER		
		Drg No	A4-01-9001-XXX-01		
		ICPL Part No	RCA-9001-XX-01		
Address: B-260, Peenya 2nd stage, Peenya industrial area, Bangalore-560058.		Customer Part No	TBA	Rev	00
Drafted by	MC	Angle of projections	Third angle	Scale	1:1
Checked	RV	Date	11-06-2024	Sheet	1 of 1
Approved	NC	All dimensions are in mm		Size	A4
Tolerance	<small>Unless otherwise specified for length 0 - 500 ±5 1000 - 1500 ±15 500 - 1000 ±10 1500 - 2000 ±20</small>	<small>*The document is a property of Interface Connectronics Pvt Ltd and is considered company confidential. Reproduction, unauthorised use, or disclosure of this drawing in whole or in part is prohibited.*</small>			

5

4

3

2

1

5

4

3

2

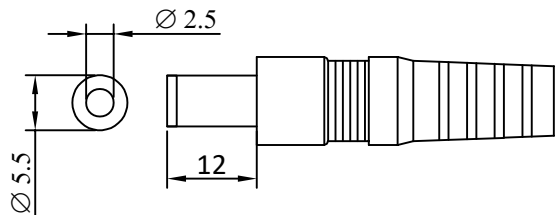
1

SIDE A: DC PIN

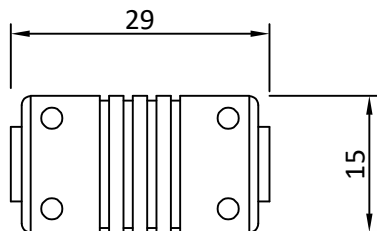
CONNECTOR: 5.5*2.5*12

DESCRIPTION: FEMALE BARREL TYPE CONNECTOR

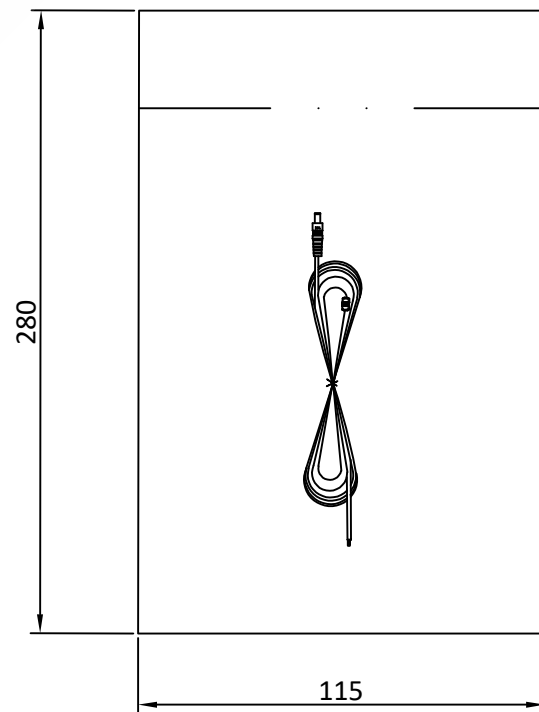
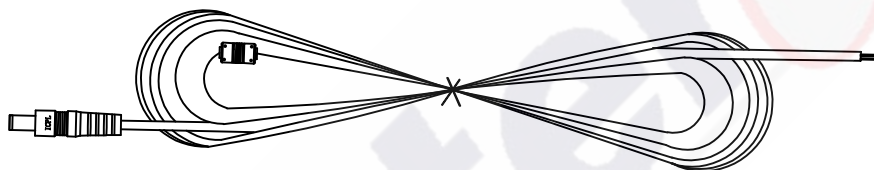
RATING (AMP): 5A



FERRITE DIMENSIONS:



SINGLE PIECE PACKING DETAILS:



5

4

3

2

1