

Interface® (Distribution Division)

Interface with over three decades in distribution has partnered with following Best Global Brands for providing latest technology products and solutions from Connectors to Connectivity and IT Security Solutions.

Amphenol

[Amphenol](#) is one of the world's largest designers, manufacturers and marketers of connectors.

Belden

For more than a century, [Belden](#) has been making connections. From the wire that set the standard for the first industrial revolution, to advanced network and data solutions enabling the breakthroughs of tomorrow, our work is the bridge between what is and what could be.

Kensington®

[Kensington](#) products are designed to enhance your productivity and streamline your workspace. With a focus on quality, innovation and ergonomic designs.



[Variconn](#) offers innovative design and manufacturing solution in the fields of Hand Tools, Cables, and Connectivity.

BAFO®

[Bafo](#) Technologies offers innovative connectivity solutions designed to enhance your productivity, with a commitment to quality and performance.



Provides a wide range of connectors, cables, and computer accessories. [Interface](#) products include various HDMI and USB cables, power distribution units, and multi-port USB-C hubs with diverse connectivity solutions.

multiLane

[MultiLane](#) produces leading-edge test solutions for the latest data center and high-speed IO technologies.



www.icplindia.com

+91 97399 52969

sales@icpl.co.in

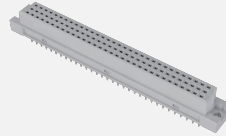
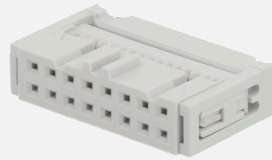
Connectors to Connectivity®

Karnataka, Bangalore 560022, India

Amphenol

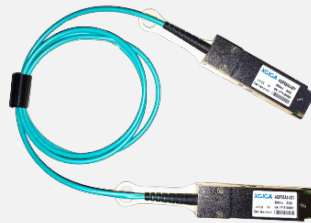
COMMUNICATION SOLUTIONS

D subminiature | Euro | IDC | RJ Modular Sockets | Terminal Blocks



HI-SPEED

SFP | QSFP Transceivers and Cables



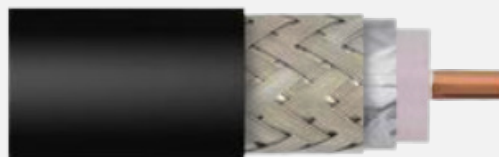
CIRCULAR CONNECTORS

Circular Connector | 62 IN Series | D38999



AMPHENOL RF

Microwave Connectors | Cables | Cable Assemblies



WWW.ICPLINDIA.COM

+91 97399 52969

sales@icpl.co.in

Interace[®]

Connectors to Connectivity[®]

*Image Only For Reference, Actual Product May Vary.



USB 2.0 & 3.0 & TYPE C RS232 SERIAL CABLES/ADAPTERS

DB9 Male| Female |RJ45



MULTIPOINT HUBS & DOCKING STATION

Dual Display | Triple Display



HDMI 2.0/2.1/AOC CABLES

HDMI 2.0/2.1/AOC CABLES



ACTIVE EXTENDERS & CABLES

USB 2.0 & 3.0 Active | Type C, USB 2.0 & 3.0 Cables



USB 2.0, 3.0 & TYPE C ADAPTERS

GIGA LAN | DP | HDMI | VGA



INDUSTRIAL BUS CABLES

Profibus DP/PA|Mod Bus|Device Bus/Profinet | OFC Cables

MACHFLEX CABLE

LiYCY | LiYY|350YY



CONTROL & INSTRUMENTATION CABLE

Multi Conductor Cables| Paired Cables| Audio Control & Instrumentation Cable

ETHERNET CABLES AND PATCH CORDS

CAT 6/6A UTP| CAT 6 FTP/CAT 6A SFTP | CAT 6/CAT 6A UTP LSZH Patch cords



LUMBERG INDUSTRIAL CONNECTIVITY SOLUTIONS

Cord Sets | I/O Modules- Profibus /Profinet/ Device Net| Power Connectors M12 / M8



HIRSCHMANN

Industrial Connectors | Managed Switches | Unmanaged Switches



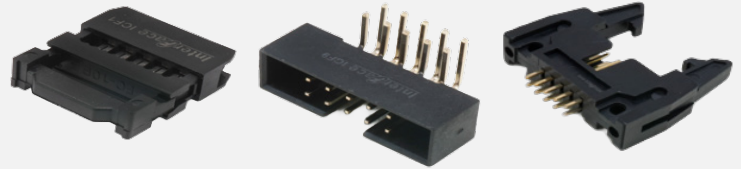
D-SUB CONNECTORS

Wire solder | PCB Straight & Right Angle | IDC | High Density



FRC CONNECTORS

IDC Socket | Box Headers | Latch Type Male



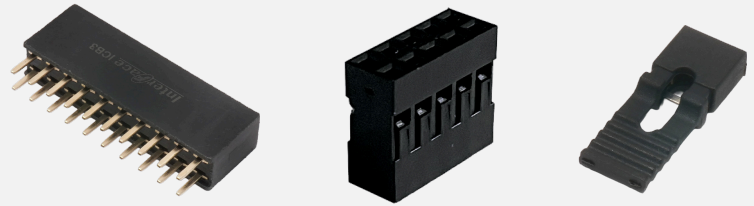
HEADER STRIPS 2.54/2.00/1.27MM PITCH

Single & Dual Row Header Strip ST & RT Angle | Customized



HOUSING 2.54/2.00/1.27MM PITCH

Single & Dual Row | Customized | Jumper



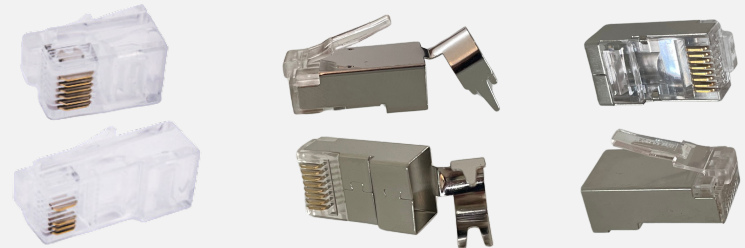
USB 2.0 A, B, Mini, Micro & Type C

USB PCB Straight | Right Angle Male/Female



RJ MODULAR PLUGS (UL File-E500793)

RJ11 4P2C 4P4C 6P2C 6P4C 6P6C | RJ45 8P4C Plug | RJ45 8P8C Shielded & Unshielded



RJ MODULAR SOCKETS

Unshielded | Half Shielded | Shielded with Fins & LED



FRC CABLES (UL File-E486063)

Pitch 1.27|1.00 | 0.635



Kensington®

PHYSICAL SECURITY/ DATA PROTECTION

Locks | Privacy Screens | Biometric Keys



INPUT DEVICES

Trackball | Keyboards | Mice wired & wireless



DOCKING STATIONS AND MULTIPOINT HUBS

Thunderbolt Docks | Type C Docks | Type C Multipoint Hubs



HEADSETS USB & TYPE C

Wired | Wireless | Bluetooth



ERGONOMICS

Laptop Riser | Back Rest | Seat Cushion | Mouse & Wrist Pads



WWW.ICPLINDIA.COM

+91 97399 52969

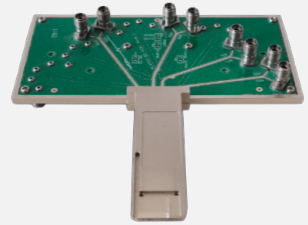
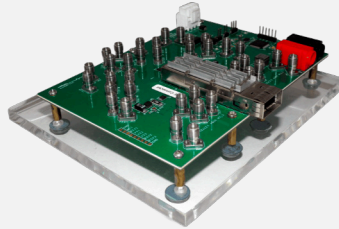
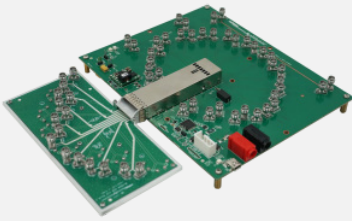
sales@icpl.co.in

Interace®
Connectors to Connectivity®

*Image Only For Reference, Actual Product May Vary.

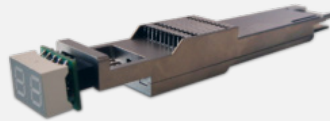
COMPLIANCE BOARDS

Module Compliance Boards (MCB) | Host Compliance Boards (HCB)



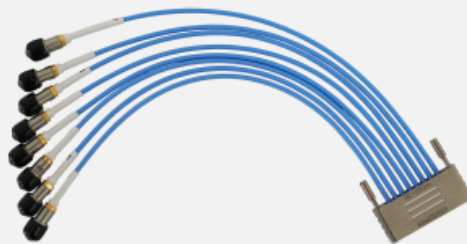
LOOPBACKS ACTIVE & PASSIVE

Industrial Grade SFP-DD, SFP, QSFP, QSFP-DD, OSFP & CFPx form factors | Active Loopbacks



SMPM CABLES

Connecting interconnects, such as MCB and HCB to test instruments



HAND TOOLS

Multipurpose Scissors | Electricians Shears | Heavy Duty Automatic Wire Stripper



Ethernet Accessories

Wire Cutter Tool For RJ45 | Pocket Size RJ45 Cable Tester

